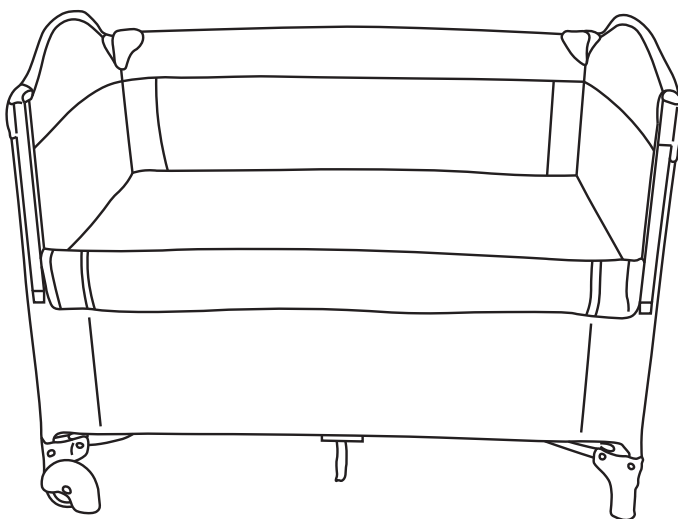




Created with Passion  
Designed for Safety

# SOOTHE CO-SLEEPER



**INSTALLATION INSTRUCTIONS**

## WARNINGS AND SAFETY REQUIREMENTS

! WARNING: Read all instructions BEFORE assembly.

KEEP INSTRUCTIONS FOR FUTURE USE.

- The playard requires adult assembly.
- The playard must be fully erected prior to use.
- Ensure that all latches are secure.
- Failure to follow these warnings and the instructions could result in serious injury or death.
- The lowest position is the safest and should be used as soon as your child starts sitting up.
- Infants can suffocate in gaps between a mattress too small or too thick and product sides and on soft bedding.
- Use ONLY the mattress provided with this product. Never add a mattress, pillow, comforter, or padding.
- Do not use any attachments or items not included in this instruction manual with this playard.
- Do not suspend strings over the playard or attach strings to toys.
- Strings can cause strangulation! Do not place items with a string around a child's neck such as hood strings or pacifier cord.
- Do not place the playard near a window where cords from blinds or drapes can strangle your child.
- Discontinue use of the product when child is able to climb out of the playard.
- Do not modify the playard or add any attachments that are not listed in the instruction manual.
- Do not use the playard if there are any loose or missing fasteners, loose joints, broken parts, or torn fabric etc.

## WARNINGS AND SAFETY REQUIREMENTS

- The playard is for playing or sleeping. When used for playing, never leave your child unattended and always keep your child in view.
- Do not use plastic bags or other plastic film as mattress covers not sold and intended for that purpose.
- Do not add any items to confine your child in playard.

## WARRANTY

- The warranty period starts from the date of purchase and is valid for a period of 12 months.
- The warranty applies to material and manufacturing defects only.
- The date of purchase can only be determined with an original sales receipt.
- The warranty is only applicable to the original owner and is not transferable.
- The warranty is only applicable to products that have not been adapted by the user.
- In the case of any defects, the owner is required to return the product to the retailer. If the retailer cannot solve the problem, he must return the product, complete with a clear description of the complaint and the original sales receipt to the manufacturer. An exchange or return cannot be demanded.
- Repairs do not constitute an extension to the warranty term.
- The manufacturer is not liable for any damages other than those on products supplied.
- No warranty is given if:
  - The product is not supplied to the manufacturer complete with the original sales receipt.
  - Defects are caused by improper use or maintenance that is not in accordance with the instruction in this manual.
  - Repairs are carried out by third parties.
  - Defects are caused by neglect.
  - Damage is determined.
  - If there is normal wear and tear of the parts, belts and/or cover, which may be expected from everyday use.
  - The stated warranty terms and conditions have not been satisfied.

## OPENING THE PLAYARD

- Remove the playard from the carry bag.
- Loosen the velcro straps of the mattress and remove the playard (Fig.1 & 2).
- Open the top corners of the playard ensuring that the feet remain close together (Fig.3).
- Lock the side arms into place (Fig.4).

NOTE: If the arms do not want to lock into place, ensure that the feet are close together.

- Press the middle lock downwards until it locks into place (Fig.5).

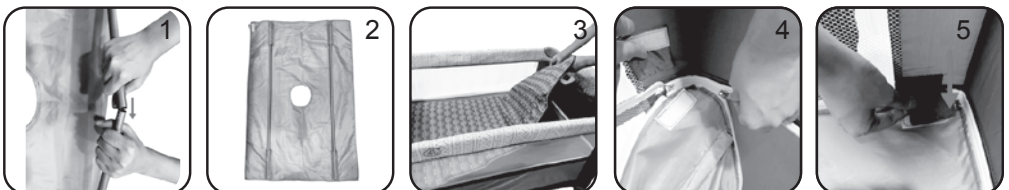


## USING THE BASSINET

- Slide the bassinet poles into the sleeves and connect them together (Fig.1 & 2).
- Place the mattress into the playard (Fig.3).

### USING THE SECOND LAYER

- The second layer is attached to the playard with a zipper.
- To remove the second layer, unzip the zipper (Fig.4).
- To attach the second layer, connect the zipper and fasten all the way around (Fig.5).



## CLOSING THE PLAYARD

- Remove the mattress (Fig.1).
- Remove the bassinet poles (Fig.2).
- Pull the tab on the base of the playard upwards and unclip the arms (Fig.3).
- Wrap the mattress around the playard and fasten the velcro strips (Fig.4).
- Place the playard into the carry bag (Fig.5).

NOTE: If the arms do not want to unlock, ensure that the feet are close together.



## USING THE SECOND LEVEL

- Unzip the zipper on both sides (Fig.1).
- Press the locking mechanisms on both sides (Fig.2).
- Slide the rail downwards (Fig.3 & 4).

### IMPORTANT!

- Attach the zipper of the second layer to the zipper on the side rail (Fig.5).



## ATTACHING THE PLAYARD TO THE BED

- Connect the clip of the strap to the sides of the playard (Fig.1).
- Extend the strap and place it between the mattress and base of the bed (Fig.2).

