

SAFETYWAY

the only way

SLUMBER

Read all instructions
BEFORE assembly
and USE of product.

KEEP
INSTRUCTIONS
FOR FUTURE USE.



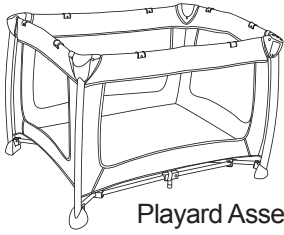
Failure to follow these warnings and instructions
could result in serious injury or death.

- PLEASE READ THESE INSTRUCTIONS CAREFULLY TO ENSURE THE SAFETY OF YOUR CHILD.
- ALWAYS PROVIDE THE SUPERVISION NECESSARY FOR THE CONTINUED SAFETY OF YOUR CHILD WHEN USED FOR PLAYING,
- NEVER LEAVE CHILD UNATTENDED.
- Playard MUST be fully assembled with all top rails and center lock locked into position prior to use. Ensure all arms are securely locked..
- Strings can cause strangulation! NEVER place items with a string around a child's neck such as hood strings or pacifier cords. NEVER suspend strings over playard or attach strings to toys.
- Discontinue use of the product when child is able to climb out or has reached the height of 890 mm or weight of 14 kgs, whichever comes first.
- When child is able to pull to standing position, remove bumper pads, large toys and other objects that could serve as steps for climbing out.
- NEVER place product near a window where cords from blinds or draps can strangle a child.
- NEVER use this product if there are any loose or missing fasteners, loose joints, broken parts, or torn mesh/fabric. Check before assembly and periodically during use.
- NEVER substitute parts.
- NEVER use plastic shipping bags or other plastic film as mattress covers not sold and intended for that purpose. They can cause suffocation.
- This product is not intended for commercial use.

MAINTENANCE AND CLEANING INSTRUCTIONS:

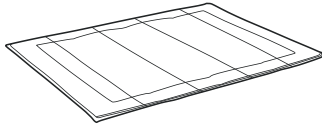
Use only household mild soap and warm water.

DO NOT USE BLEACH.
DO NOT MACHINE WASH.

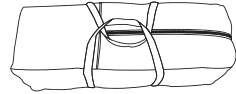


Playard Assembly

Parts List

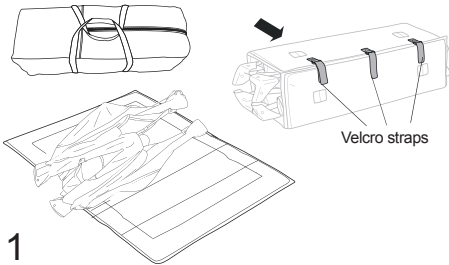


Mattress



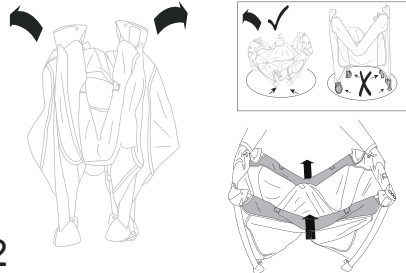
Carry Bag

Remove the playard from the carry bag and undo the velcro straps



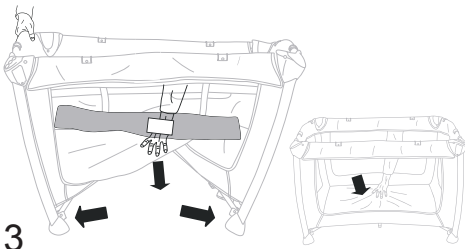
1

Pull the top corners outwards ensuring the feet remain as close to each other as possible. Pull the arms upwards and lock into place.



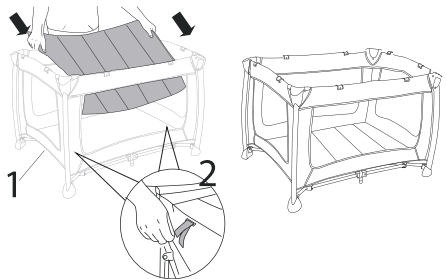
2

Push the middle of the playard downwards. This will then open the legs and lock the playard into place.



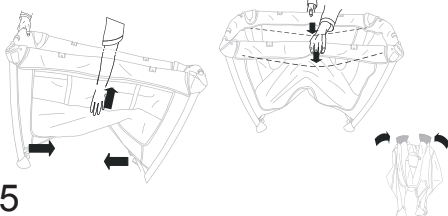
3

Place the mattress into the playard and fasten the velcro straps as indicated by image below.



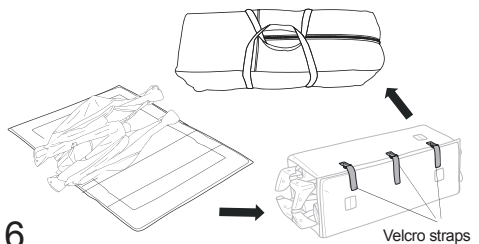
4

To fold the playard, remove the mattress and pull the handle in the middle of the playard upwards to 90deg then pull upwards. Once the centre piece is up, press the buttons on all 4 sides to release the arms and push the corners inwards.



5

Place the playard onto the mattress. Wrap the mattress around the playard and then fasten the velcro straps. Place the playard into the carry bag.



6